

VUE

---

by

CRYSTAL BAY

JVC



V  
UE

URBAN LIVING REINVENTED





# CRYSTAL BAY

DEVELOPMENT

Welcome to a realm where living goes beyond the ordinary - a philosophy we proudly call «Live in Design», here we don't just construct houses; we craft spaces and environments that seamlessly harmonize with your unique lifestyle.

This encapsulates our approach to every project we undertake. It's a commitment to creating not just physical structures but living experiences that resonate with the rhythm of modern life. Our philosophy centres around the belief that the spaces we inhabit should not only meet our functional needs but elevate our daily experiences.

Choosing our project means choosing a lifestyle, not just a residence. We invite you to explore our philosophy, where design meets living, and every space is an embodiment of comfort, style, and functionality. Crystal Bay Group - Live in Design. Live Exceptionally.





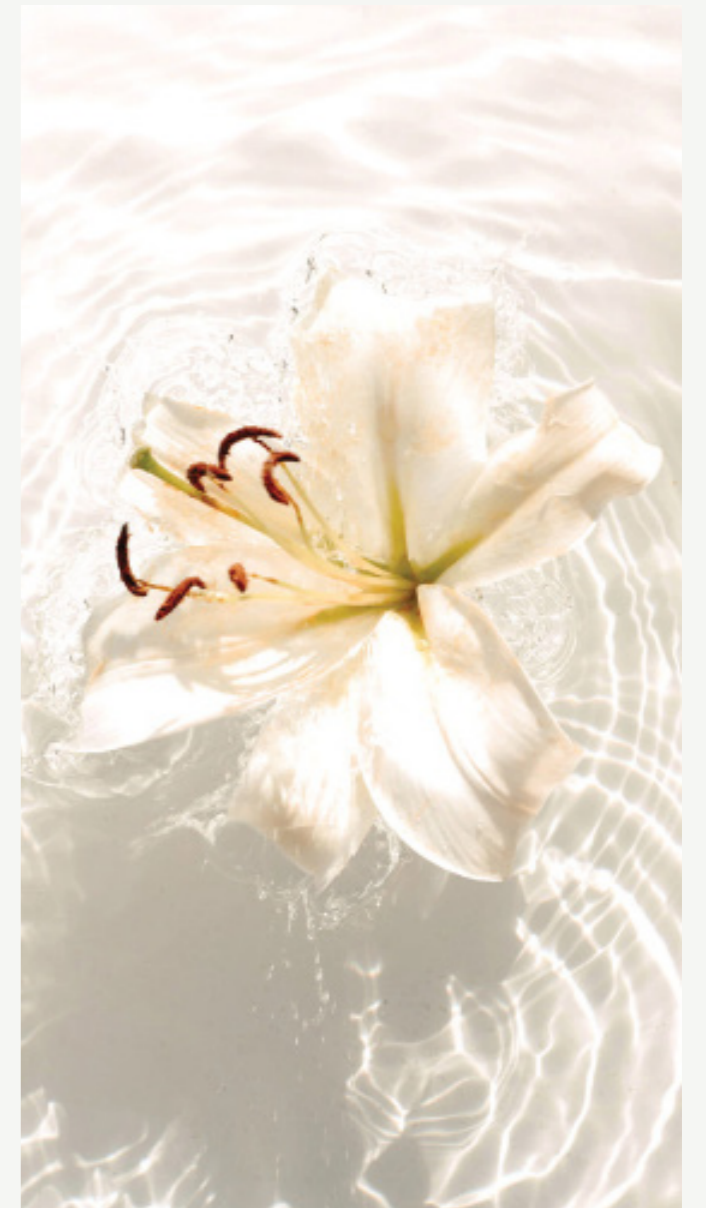
*“Welcome to your sanctuary of  
elegance and serenity.”*



V  
UE



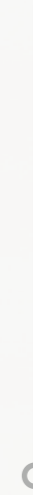
Enter a world where quiet sophistication gracefully intertwines with the extraordinary, inviting you to embark on a captivating journey through the exquisite weave of elegant surroundings.







## Dubai Living



Dubai unquestionably serves as the paramount economic center, attracting worldwide attention. Its outstanding infrastructure and vibrant culture create the perfect backdrop for a substantial urban lifestyle. Dubai is a mesmerizing urban masterpiece, characterized by communities that mimic self-contained miniature cities within the expansive metropolis.



WHERE  
LIFE  
ALWAYS  
HITS A  
HIGH NOTE

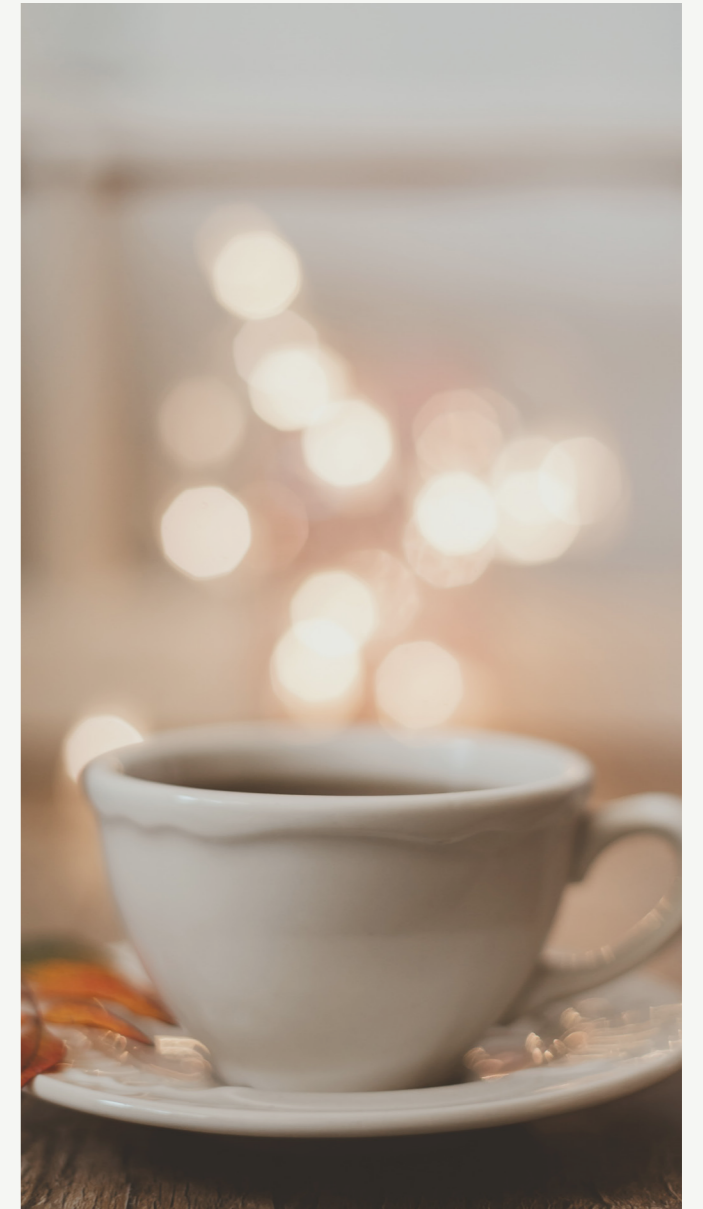




## Lifestyle



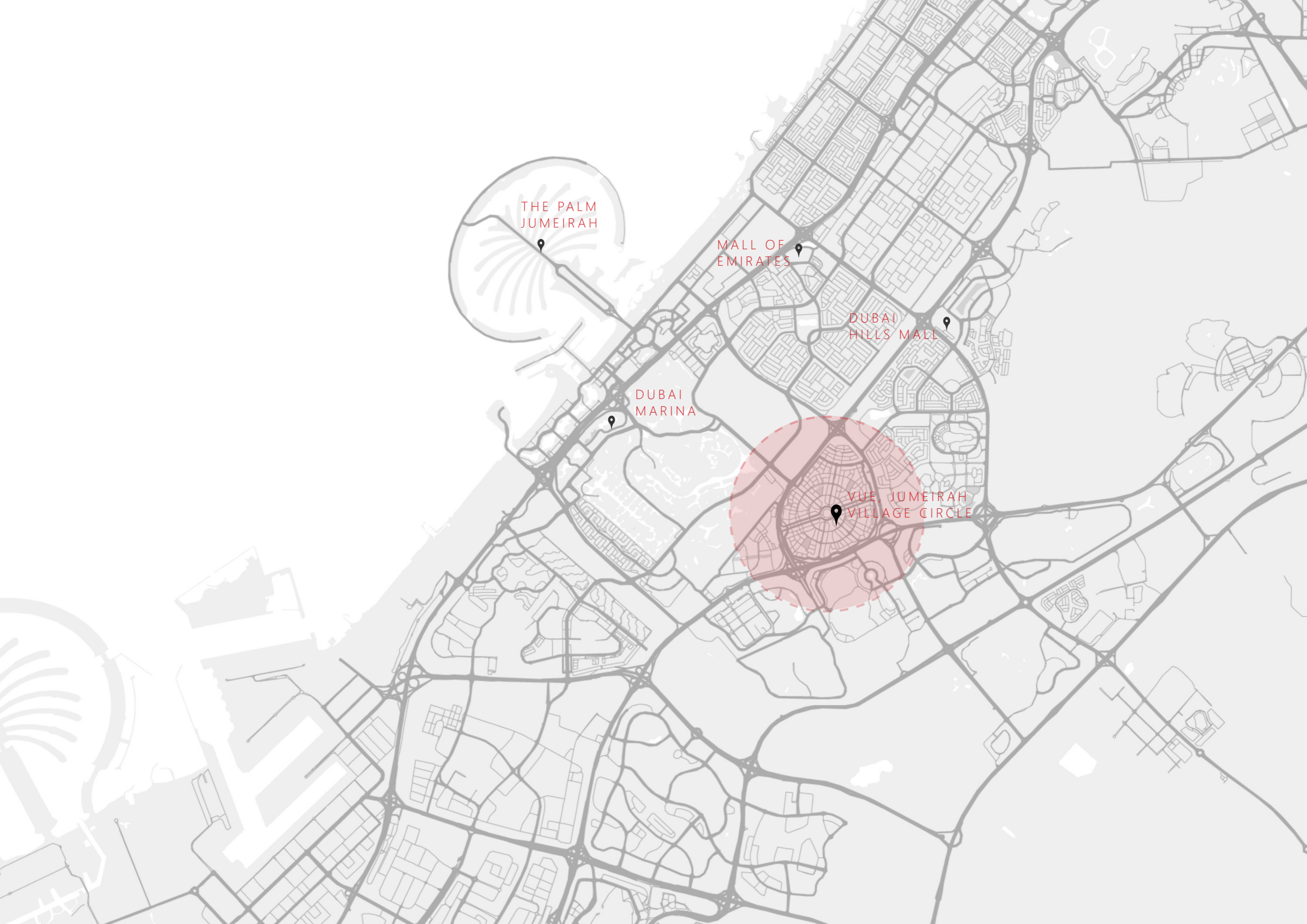
Vue offers its residents a serene and unhurried way of life within a tranquil and peaceful environment. The building is thoughtfully furnished with an extensive range of amenities, such as a private swimming pool, all meticulously designed to assist residents in sustaining a sense of relaxation and revitalization. This dedicated focus on establishing an environment that prioritizes relaxation and tranquility plays a pivotal role in empowering residents to lead a more balanced, all-encompassing, and fulfilling life.



## Location



In the heart of JVC, you'll be surrounded by a vibrant urban atmosphere. Within a short distance, you can effortlessly reach key landmarks such as Mall of the Emirates, Dubai Hills Mall, and the Burj Khalifa district—all within a 15-20 minute drive. Vue, transforming the traditional concept of a city center, also provides seamless connectivity to Sheikh Mohammed Bin Zayed Road, making your city access not just easy but enjoyable.



THE PALM  
JUMEIRAH

MALL OF  
EMIRATES

DUBAI  
HILLS MALL

DUBAI  
MARINA

VUE, JUMEIRAH  
VILLAGE CIRCLE





Vue is a mid-rise residential condominium situated in JVC. Its architectural design aims to blur the boundaries between interior and exterior spaces, skillfully intertwining private swimming pools with lavishly designed living areas, creating a harmonious fusion of meticulously crafted luxury interiors.



## Architecture



The exterior structure lends the building an industrial grid-style aesthetic by utilizing steel as the primary material for a robust framework. Simultaneously, the presence of the pool element enhances the overall tactile smoothness.











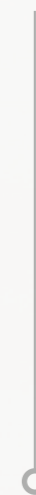








## Elegance



The interior design embodies a minimalistic contemporary style that places a strong emphasis on creating an ambiance of warmth, harnessing abundant natural light, and showcasing clean lines. It also showcases uniquely refined aesthetics and exquisite architectural details. The color palette draws inspiration from the natural world, featuring soothing shades of beige, grey, brown, and tan.

In every room, you'll find elements of beige travertine and walnut, contributing to a unified and cohesive appearance throughout the space.



## Arrival



The arrival experience is tranquil, featuring a spacious reception lobby and a range of amenities, including yoga and gym facilities, in addition to a substantial swimming pool area. The reception area seamlessly blurs the line between a formal entrance and the welcoming aesthetics of a lounge.







## RECEPTION

Residents will be warmly welcomed into a VIP reception where central security teams ensure convenient access and enhanced visitor management. A premium concierge service will also be at the service of residents, providing them with the comforts of exclusive lifestyle management.







## SMOOTH TRANSITION



Witness elevators that are not just functional but also a testament to architectural elegance. Our designs seamlessly integrate with your building aesthetics, enhancing the overall visual appeal.

Experience a new standard of comfort with our state-of-the-art circulation technology. Bid farewell to abrupt stops and starts – our elevators boast advanced systems that guarantee smooth transitions between floors.





## Elegant Essence



THE RADIANT BEAUTY OF FINE NATURAL ELEMENTS,  
AND INTERIORS AWASH IN NATURAL SUNLIGHT.

By harmonizing soft lines and subtle tones, the radiant  
interiors of Vue shimmer from dawn till dusk.







Austere Interior











## THE SPA LIKE LUXURY YOU DE- SERVE



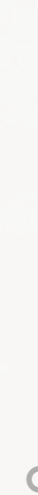
After a day of high entertainment change your tune to one of revitalising serenity in your sleek, beautifully conceived bathroom. Classic lines, superior finishing and a calming colour scheme imbue a sense of order and well-being.







## YOUR STYLISH SANCTUARY



The bathroom is enveloped in timeless elegance and effortless glamour a room fit for a star. It offers top practicality with luxurious fittings and taps, stone and marble countertops and cream coloured tiling to relax the senses.



## AN INCOMPARABLE LIST OF AMENITIES & Features



- Outdoor cinema
- Tranquility pool
- Techno Gym
- Mini golf
- Zen garden
- Splash pool ( kids)
- Plunge pool
- Single basketball court
- Kids play zone
- Retail
- Meditation lounge
- Social space with porche foyer
- Outdoor BBQ station
- EV charging station
- Smart waste system
- Sustainable Water conservation system
- Smart home







## Smart Homes



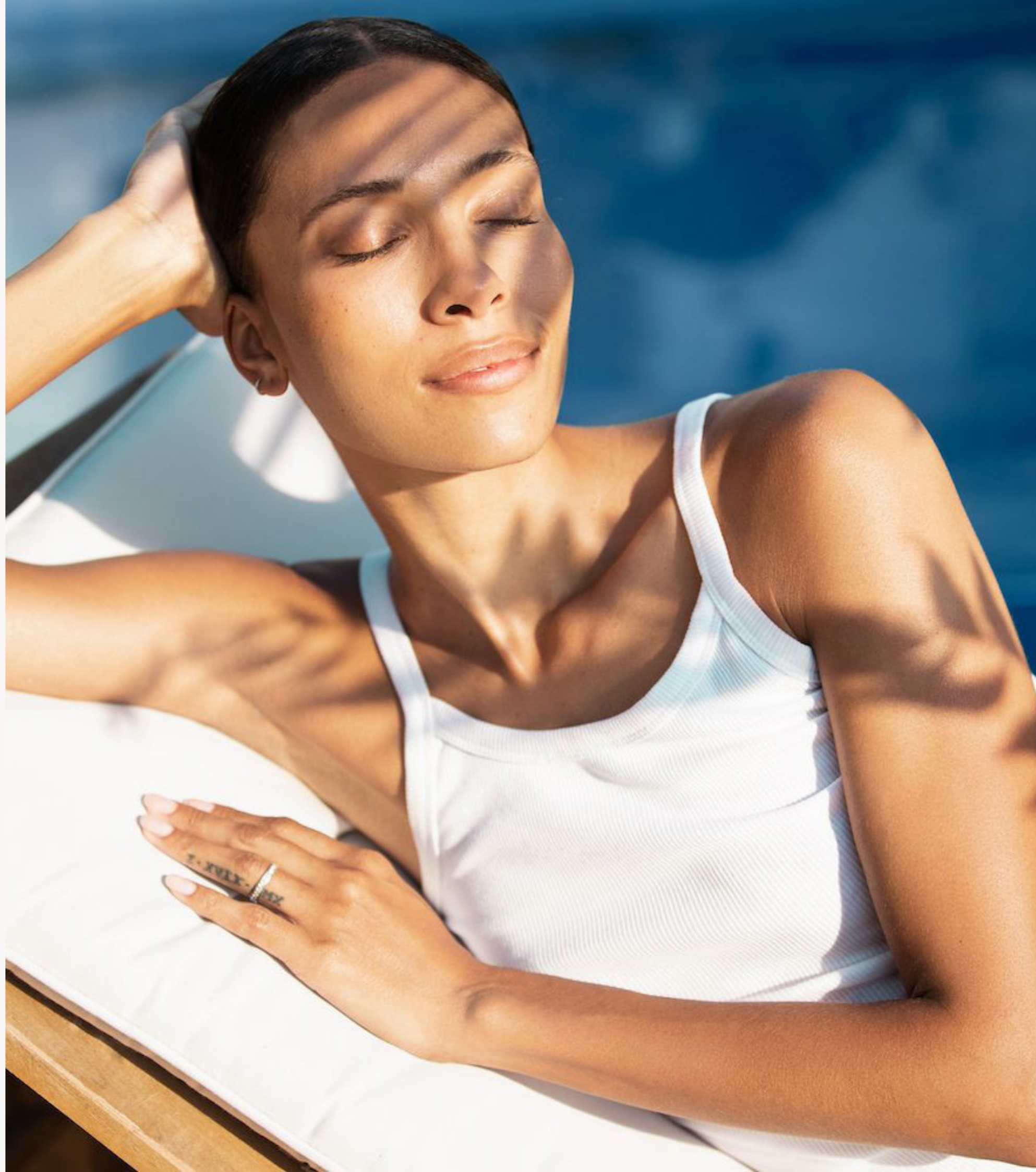
Vue adopts a sustainable lifestyle approach with amenities such as an electric vehicle charging station, a smart waste management system, an eco-friendly water conservation system, and an interconnected smart home—all enhancing the day with a vibrant energy.



## A Haven of Relaxation & Beauty



An enticing amenity, the garden with a BBQ station and mini golf offers residents and guests a delightful outdoor retreat. This space is meticulously designed for relaxation and social gatherings, providing a perfect setting to enjoy the serenity of nature while indulging in culinary delights.





## A World of Fun

DISCOVER EDUCATIONAL  
ACTIVITIES THAT  
ENTERTAIN AND ENLIGHTEN.

Children's faces will illuminate with joy as they discover a delightful assortment of games in the charmingly decorated playroom.







## Tranquility Wave Pool



ELEVATED AMENITIES  
THAT ENHANCE MOODS  
AND LIFESTYLES.

VUE illuminates the importance of well-being and community, as the remarkable lifestyle offerings of this stunning property infuse each day with vitality.









## Endless Motivation



FIRST-CLASS TRAINING EQUIPMENT THAT  
WILL ENSURE A POSTWORKOUT  
GLOW.

Find the motivation to work-out in  
this beautiful private resident's gym,  
with a pool view that stretch out before you.











Green Library

BRY

BRY

Books on shelves

Frederick Brown

Frederick Brown

Frederick Brown

Frederick Brown

Frederick Brown

Frederick Brown

Frederick Brown

Frederick Brown

Frederick Brown

Frederick Brown

Frederick Brown

Frederick Brown

Frederick Brown

Frederick Brown

Frederick Brown

Frederick Brown

Frederick Brown

Frederick Brown

Frederick Brown

Frederick Brown

Frederick Brown

Frederick Brown

Frederick Brown

Frederick Brown

Frederick Brown

Frederick Brown

Frederick Brown

Frederick Brown

Frederick Brown

Frederick Brown

Frederick Brown

Frederick Brown

Frederick Brown

Frederick Brown

Frederick Brown

Frederick Brown

Frederick Brown

Frederick Brown

Frederick Brown

Frederick Brown

Frederick Brown

Frederick Brown

Frederick Brown

Frederick Brown

Frederick Brown

Frederick Brown

Frederick Brown

Frederick Brown

Frederick Brown

Frederick Brown

Frederick Brown

Frederick Brown

Frederick Brown







UE

---

by

CRYSTAL BAY  
DEVELOPMENT LLC



Address - Retail 7, AMSA 2 - Tower B,  
Jumeirah Village Circle, Dubai, UAE  
Po.BOX -251389

[www.crystalbay.ae](http://www.crystalbay.ae)